



WAGIN DISTRICT HIGH SCHOOL

10 Ranford Street
WAGIN WA 6315
Telephone: 9861 1877
Facsimile: 9861 1835

School Drug Education Guidelines

Our Vision

At Wagin District High School, we believe that drug education is integral to the well-being of our students. We aim to provide a safe and supportive environment for the school community. We endeavour to engage the whole-school community in our drug education initiatives and are committed to providing our students with drug education and necessary related intervention across all year levels.

Our School Commitment

Our School Drug Education Guidelines are consistent with the *Principles for School Drug Education*. The guidelines promote a whole-school approach to drug education where school staff, students, parents and the wider-school community work together with the aim of preventing and reducing potential and existing risks of harm from drug use, to establish and maintain a safe school environment.

Our guidelines have been developed in consultation with staff, students, parents and community members to address drug education and necessary related interventions in a caring and consistent manner within the Wagin District High School community.

Curriculum

- Our three-year drug education plan identifies age-appropriate drug education content across all year levels.
- We use evidence-based drug education resources such as *Challenges and Choices* (www.sdera.wa.edu.au).
- School administration supports staff to deliver appropriate drug education by allowing in-school time for planning, providing professional development opportunities for staff and allocating funds for resources and materials.
- Classroom programs focus on skill development and develop students' knowledge and understanding, attitudes and values and promote help-seeking behaviour.
- Learning is extended from the classroom to promote parent support of drug education programs.

Ethos and Environment

- Drug Education is included in our Pastoral Care priority with support from outside agencies.
- All students have the opportunity to participate in drug education programs and initiatives.
- *School Drug Education Guidelines* are reviewed on a triennial basis in consultation with the school community.
- School administration supports staff attendance at professional development to broaden their understanding and enhance their confidence in working well with drug use issues.
- We have developed and implemented *Procedures for Incident Management and Intervention Support* and these have been communicated through the whole-school community as a part of the *School Drug Education Guidelines*.

Parents and Community

- Parents and families are involved in drug education initiatives.
- Drug education information and strategies for parents and families are provided on a regular basis through a variety of methods such as the newsletter, website, school assemblies and incursions.
- SDERA is used to identify resources and agencies that support and complement our school drug education initiatives.
- Inductions packs to new staff members include our *School Drug Education Guidelines*.
- A dedicated Safety Week is conducted on an annual basis and includes a focus on drug education

Incident Management and Intervention Support

The following Incident Management and Intervention Support flow charts illustrate the steps which will be taken in the event of a drug use incident or issue. Should you wish to contact school personnel in this regard, contact details are provided.

INCIDENT MANAGEMENT

Situation

Student/s are thought to be:

- drug affected
- in possession of a legal drug
- in possession of a suspected illicit drug.

Immediate Actions

1. Keep calm
2. Consider staff support
3. Inform student/s of concerns
4. Ensure safety of student/s
5. Get the facts
6. Inform Principal
7. Escort student/s for interview
8. Hand responsibility to Principal and document details
9. Attend to other students involved

Initial Follow-up Actions

1. Principal receives drug-related evidence – witnessed and documented
2. Inform student/s of process
3. Contact and involve parent/s
4. Establish facts
5. Determine further actions – following process for either legal or illicit drug use
6. Consider need to send home
7. Inform broader staff team
8. Document details/actions

Substance is a legal drug

1. Substance is a legal drug being used on school premises where use is prohibited
2. Substance is a legal drug being used by students who are under-age
3. Substance is a legal drug being used outside the parameters of the intended purpose (e.g. use of a volatile substance or sale/inappropriate use of prescription medication)

Legal drug – Follow-up Actions

1. Consult with parent/s
2. Determine actions
3. Provide Intervention Support
4. Document, monitor and evaluate

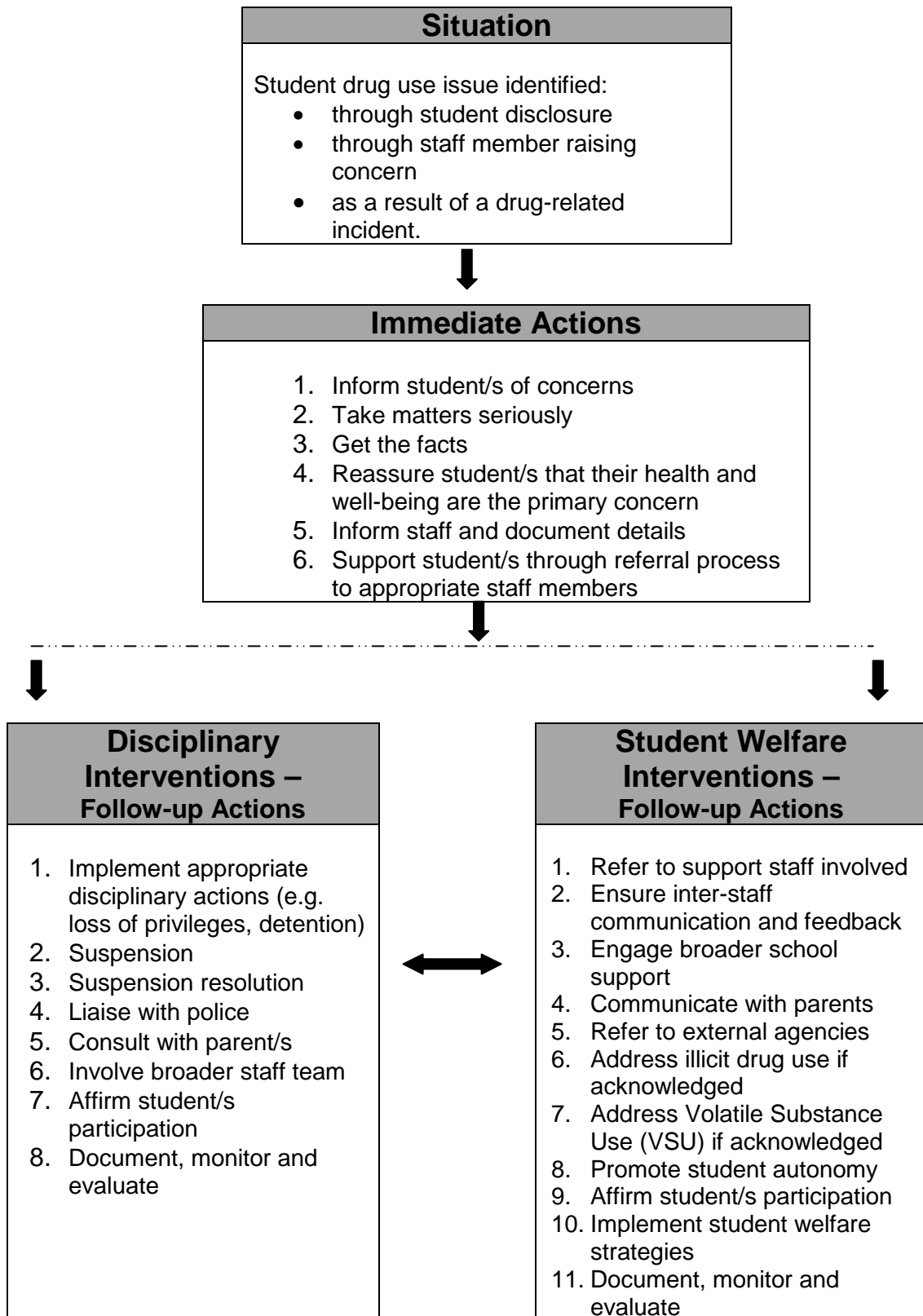
Substance is possibly an illicit drug

1. Substance is an illicit drug
2. Substance is suspected of being an illicit drug
3. Substance is being represented as an illicit drug

Illicit drug – Follow-up Actions

1. Report to Principal
2. Police are notified
3. Police conduct enquiries
4. Illicit activity suspected
5. Student searches required
6. Nature of substance uncertain
7. Determine actions
8. Provide intervention support
9. Document, monitor and evaluate

INTERVENTION SUPPORT



In the event of a drug use incident or where a student requires intervention for a drug use issue, the steps outlined in our flow charts for Incident Management and Intervention Support will be followed. In summary:

- the parent/s will be notified by appropriate personnel
- the Principal will consider notifying police if illicit drug use is suspected
- both students and parents will be offered support through appropriate interventions
- the incident or issue will be documented and other relevant agencies involved
- respect will be given to privacy and confidentiality by and for all parties
- the health and well-being of all parties involved will be given priority.

Wagin District High School does not permit students while on school premises, at any school function, excursion or camp to:

- smoke and/or possess tobacco products
- consume, possess or be affected by alcohol
- possess and/or use pharmaceutical drugs for non-medicinal purposes
- possess and/or use volatile substances
- possess and/or use illicit drugs
- possess and/or use drug-related equipment, with the exception of for intended legitimate medicinal use.

All school staff should confirm the procedures regarding the administration of medications.

